

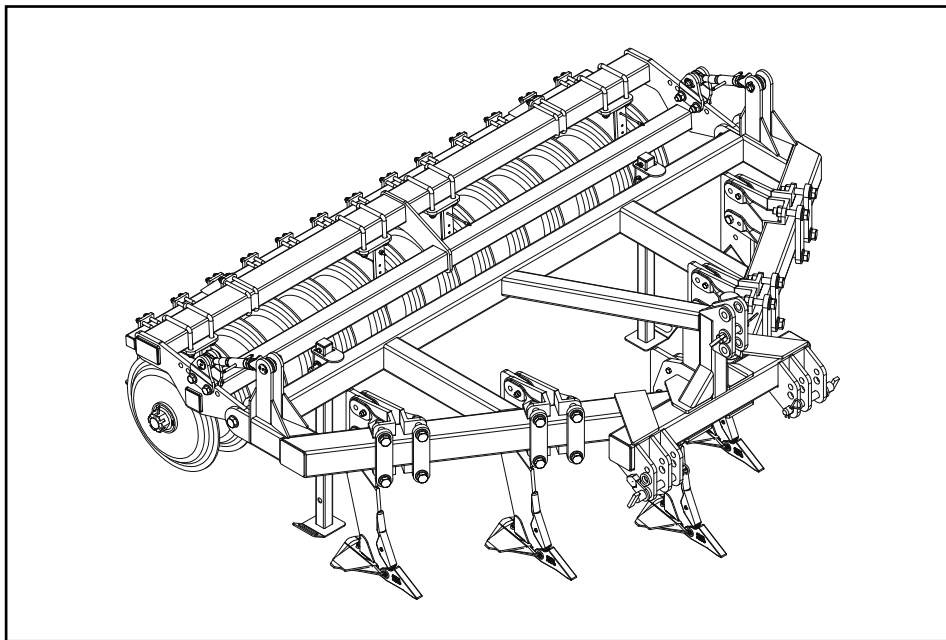
# Parts Manual

Simba Flatliner 500

 **Great Plains**  
Manufacturing, Inc.  
[www.greatplainsmfg.com](http://www.greatplainsmfg.com)



*Read the operators manual entirely. When you see this symbol, the subsequent instructions and warnings are serious - follow without exception. Your life and the lives of others depend on it!*



*Illustrations may show optional equipment not supplied with standard unit.*

ORIGINAL INSTRUCTIONS

© Copyright 2014 Printed 2014-10-24

611-128P

EN

**Contents****General**

Chassis Assembly ..... 6

**Lights**

Lights - Rear ..... 8

Lights - Front ..... 10

**Tines**

Tine Clamp Assembly ..... 12

Tine Options ..... 14

**Roll**

Roll Frame Assembly ..... 16

DD600 Roll Assembly ..... 18

DD600 &amp; DD700 Pillar ..... 20

**TurboJet**

TurboJet Mounting Kit ..... 22

**Contents (Alphabetical Order)**

Chassis Assembly .....6  
DD600 & DD700 Pillar.....20  
DD600 Roll Assembly.....18  
Lights - Front .....10  
Lights - Rear .....8  
Roll Frame Assembly.....16  
Tine Clamp Assembly .....12  
Tine Options .....14  
TurboJet Mounting Kit .....22

### Using This Manual

This manual is divided into sections. The first section contains General Information, a Table of Contents and an Alphabetical Page Index. The remaining sections divide the machine into segments (i.e. Frames, Hydraulics, etc.) which illustrate and list all parts.

The Great Plains parts in this manual are specially designed for this machine and should be replaced with Great Plains parts only.

The information in this manual is current at printing. Some parts may change to assure top performance.

Right-hand and left-hand as used in this manual are determined by facing the direction the machine will travel while in use.

Below is an example of two facing pages from a parts manual. Familiarize yourself with the contents of these pages.

### Manual Replacement

Replacement manuals are available. Refer to your dealer for additional information.

### Manual Revisions

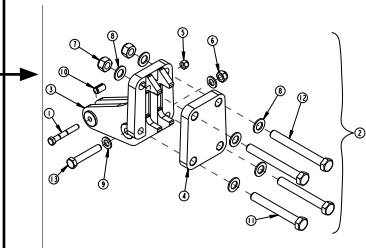
When this manual is revised, the modification date is printed on the front cover and on the revised page(s).

### Touch-up Paint

Repaint parts where paint is worn or scratched to prevent rust. Aerosol touch-up paint is available. To order use Great Plains parts numbers below:

- GP Green      821-001C
- GP Black     821-002C

**Illustration Title** → Tine Mount - Shear Bolt

**Illustration** → 

**Illustration Number** → 45007

**Machine** → Simba ST-Bar 606-037P

**Manual Part Number** → 10

**Page number** → 2013-08-21

**Parts List** →

Item	Part No.	Part Description	Comments
1	604-309D	HHCS M12X1.75X85 GR10.9 SPTHD	
2	606-038A	SHEAR BOLT UNIT CIVI C/PLATE	COMPLETE UNIT AS SHOWN
3	606-041H	TINE SHEAR CLAMP	
4	606-078D	PLATE 25MM	
5	803-281C	NUT HEX NYLOCK M12X1.75 FLT	
6	803-282C	NUT HEX M16X2.00 NYLON INSERT	
7	803-393C	NUT HEX NYLOCK M20X2.5	
8	804-244C	WASHER FLAT M20 FLT	
9	804-241C	WASHER FLAT M16 FLT	
10	827-143C	BUSH SPRUNG 4*16.5X13.5X26.15	
11	842-050C	HHCS M20X2.0X180 GR8.8	
12	842-051C	HHCS M20X2.0X180 GR8.8	
13	842-098C	HHCS M16X2X90 GR8.8 SPTHD	

2013-08-21      11      Simba ST-Bar 606-037P

## Hardware Legend

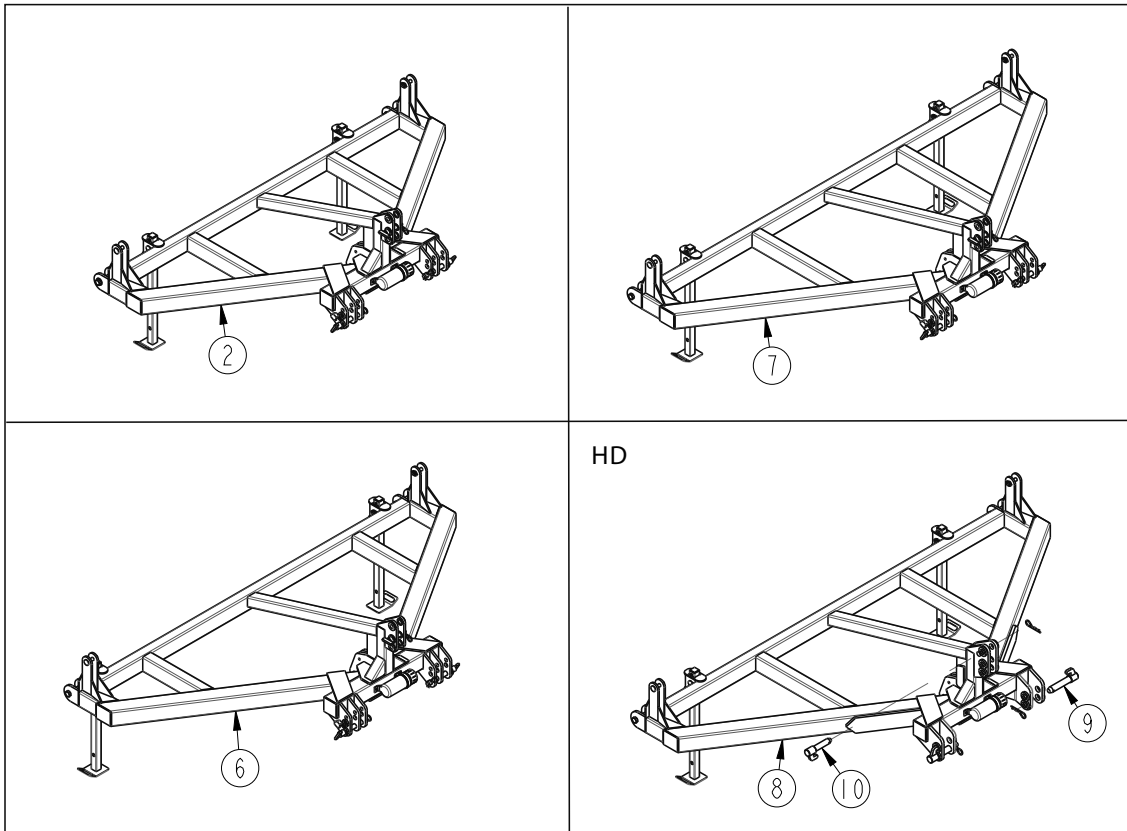
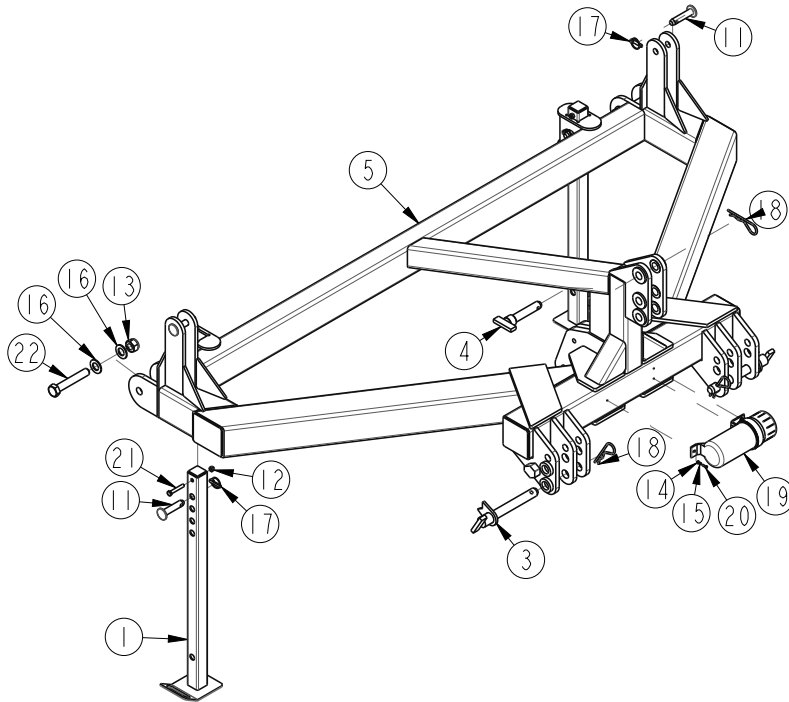
<b>ADJ</b>	Adjuster
<b>AR</b>	As Required
<b>BSP</b>	British Standard Pipe
<b>C</b>	Cap Screw
<b>CP</b>	Cotter Pin
<b>CPHSSS</b>	Cup Point Hex Socket Set Screw
<b>CPSHSS</b>	Cup Point Square Head Set Screw
<b>CPSQHSS</b>	Cup Point Square Head Set Screw
<b>CRFCHMS</b>	Cross Recess Flat Countersunk Head Mach. Screw
<b>CRPHMS</b>	Cross Recess Pan Head Machine Screw
<b>CRPHTFS</b>	Cross Recess Pan Head Thread Forming
<b>CRRHMS</b>	Cross Recess Round Head Machine Screw
<b>CRTHMS</b>	Cross Recess Truss Head Machine Screw
<b>CSNB</b>	Countersunk Square Neck Bolt
<b>FHMS</b>	Flat Head Machine Screw
<b>FTC</b>	Full Thread Cap Screw
<b>H</b>	Hex Nut
<b>HCLN</b>	Hex Center Lock Nut
<b>HFLCS</b>	Hex Flange Lock Cap Screw
<b>HFS</b>	Hex Flange Screw
<b>HFSLN</b>	Hex Flange Serrated Lock Nut
<b>HFSS</b>	Hex Flange Serrated Screw
<b>HHCS</b>	Hex Head Cap Screw or Metric Bolt
<b>HSBHCS</b>	Hex Socket Button Head Cap Screw
<b>HSFCHCS</b>	Hex Socket Flat Countersunk Head Cap Screw
<b>HSHCS</b>	Hex Socket Head Cap Screw
<b>HSSS</b>	Hex Socket Head Screw
<b>HTLN</b>	Hex Top Lock Nut
<b>HWHCS</b>	Hex Washer Head Cap Screw

<b>HWHMS</b>	Hex Washer Head Machine Screw
<b>HXBHCS</b>	Hex Socket Button Head Cap Screw
<b>J</b>	Hex Jam Nut
<b>JIC</b>	37 Degree Tapered Thread
<b>L</b>	Helical Spring Lock Washer
<b>LH</b>	Left Hand
<b>LUG</b>	Lug Bolt
<b>NFC</b>	National Fine Cap Screw
<b>NPSM</b>	National Pipe Straight Mechanical
<b>NPTF</b>	National Pipe Taper Fuel
<b>P</b>	Wide Plain Washer
<b>PHMS</b>	Pan Head Machine Screw
<b>PLOW</b>	Plow Bolt
<b>QRC</b>	Quick Release Coupling
<b>RH</b>	Right Hand
<b>RHMS</b>	Round Head Machine Screw
<b>RHSNB</b>	Round Head Square Neck Bolt
<b>SFCHMS</b>	Slotted Flat Countersunk Head Machine Screw
<b>SFHMS</b>	Slotted Fillister Head Machine Screw
<b>SP</b>	Special
<b>SP SCREW</b>	Special Screw
<b>SQHSS</b>	Square Head Set Screw
<b>SRHMS</b>	Slotted Round Head Machine Screw
<b>SSS</b>	Socket Set Screw
<b>STCS</b>	Self Tapping Cap Screw
<b>STHMS</b>	Slotted Truss Head Machine Screw
<b>WHEEL</b>	Wheel Studs and Hub Long Bolts
<b>WING</b>	Wing Bolt

## Replacement Hardware

The Hardware Legend above lists hardware abbreviations used in the parts lists. The use of improper grades of hardware can result in personal injury, damage to equipment, or loss of property.

# Chassis Assembly

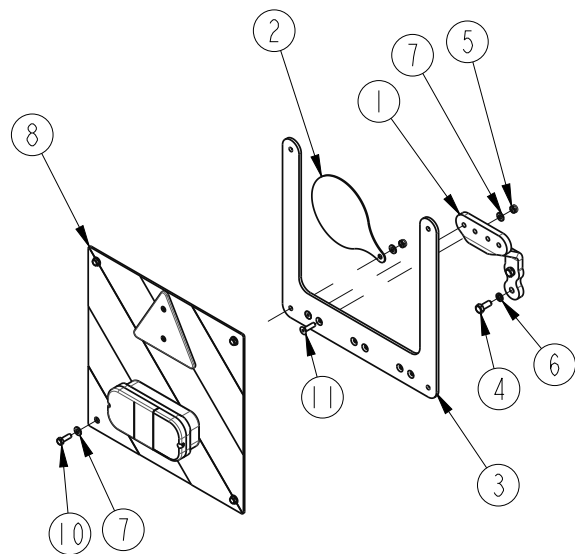
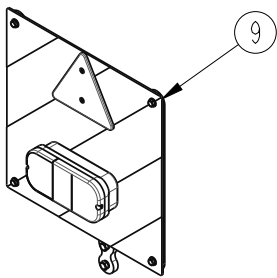


61001

## Chassis Assembly

Item	Part No.	Part Description	Comments
1	611-001H	PARKING STAND	
2	611-002H	MAINFRAME - 3.5M	
3	611-006H	PIN LOWER LINK CAT. 3	
4	611-007H	PIN UPPER LINK CAT. 3	
5	611-008H	MAINFRAME - 3.0M	
6	611-010H	MAINFRAME - 3.8M	
7	611-014H	MAINFRAME - 4.2M	
8	611-017H	MAINFRAME - 4.2M HEAVY DUTY	
9	611-018H	PIN Ø50 X 235 CAT 4 LOWER	
10	611-019H	PIN Ø45 X 190 CAT. 4 UPPER	
11	611-060D	PIN Ø25 X 115	
12	803-281C	NUT HEX NYLOCK M12X1.75 PLT	
13	803-416C	NUT HEX M30X3.5 NYLON INSERT	
14	804-160C	WASHER FLAT M6 PLT	
15	804-226C	WASHER LOCK M6 PLT	
16	804-257C	WASHER FLAT M30 - OD60MM PLT	
17	805-460C	LYNCH PIN CAT 2	
18	805-480C	R CLIP Ø7X170	
19	817-928C	MANUAL HOLDER	
20	842-021C	HHCS M6X1X20 GR8.8	
21	842-029C	HHCS M12X1.75X75 GR8.8	
22	842-043C	HHCS M30X3.5X180 GR8.8	

# Lights - Rear



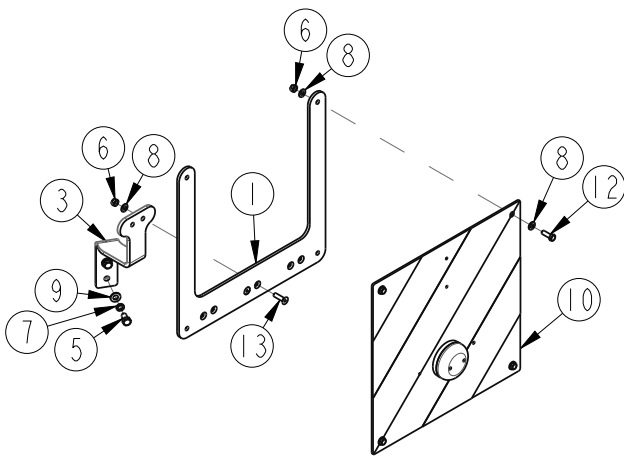
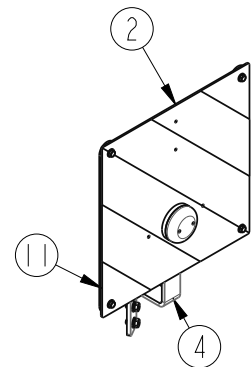
61013



**Lights - Rear**

<b>Item</b>	<b>Part No.</b>	<b>Part Description</b>	<b>Comments</b>
1	601-356D	PLATE 12MM	
2	603-563D	DECAL MOUNT - SPEED	
3	608-258D	PLATE 6MM	
4	802-997C	HHCS M10X1.5X25 GR8.8	
5	803-422C	NUT HEX M8X2.00 NYLON INSERT	
6	804-158C	WASHER SPRING LOCK M10 PLT	
7	804-161C	WASHER FLAT M8 PLT	
8	833-608C	LIGHT BOARD RRH	
9	833-609C	LIGHT BOARD RLH	
10	842-023C	HHCS M8X1.25X25 GR8.8 FTTHD	
11	842-057C	HSFCHCS M8X30 CSK	

# Lights - Front

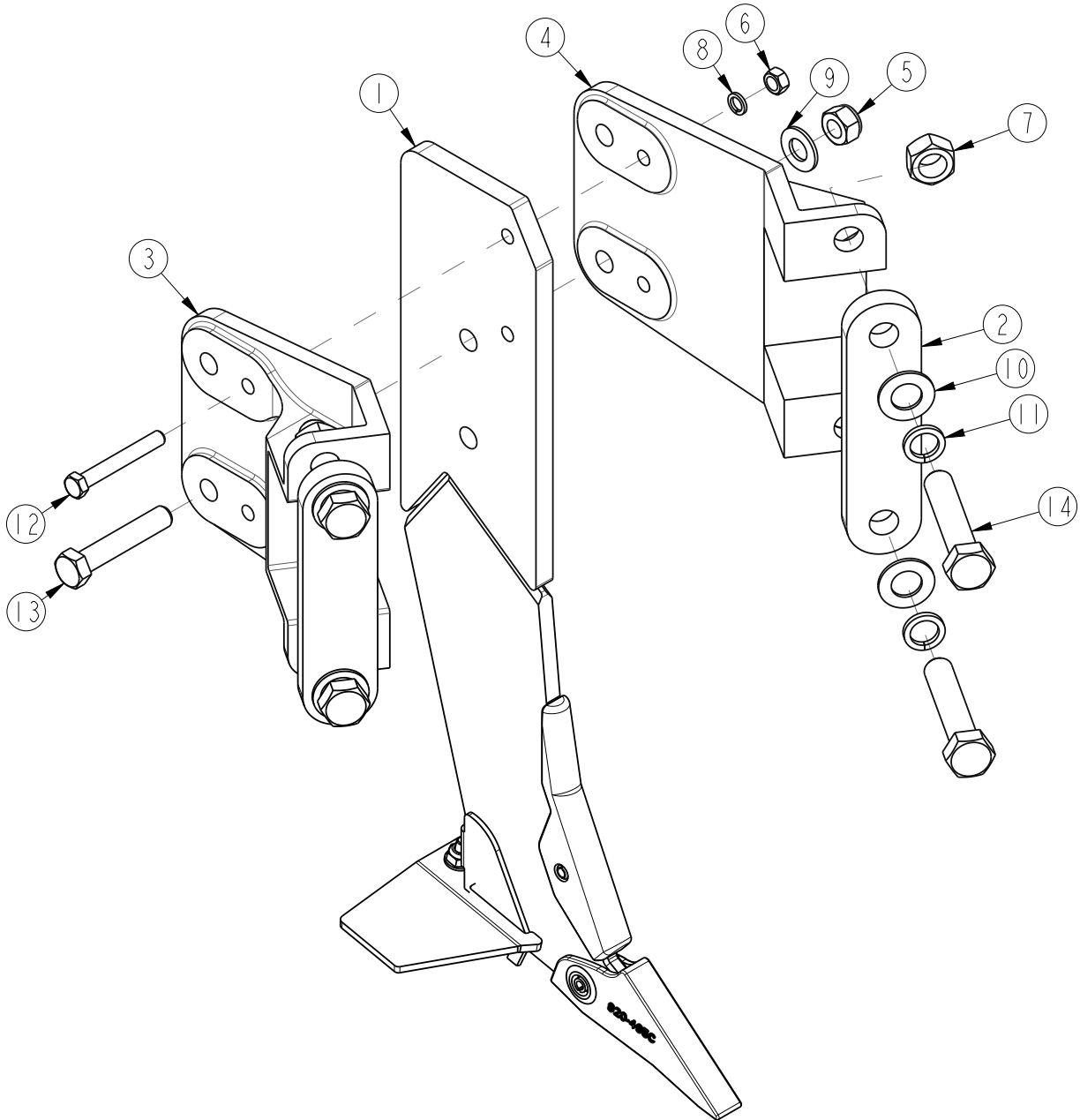


61014

**Lights - Front**

<b>Item</b>	<b>Part No.</b>	<b>Part Description</b>	<b>Comments</b>
1	608-258D	PLATE 6MM	
2	611-107V	FRONT LIGHT ASSEMBLY	
3	611-332D	LIGHT BRACKET RH	
4	611-333D	LIGHT BRACKET LH	
5	802-403C	HHCS M10X1.5X20 GR8.8 THD-LCK	
6	803-278C	NUT HEX NYLOCK M8X1.25 PLT	
7	804-158C	WASHER SPRING LOCK M10 PLT	
8	804-161C	WASHER FLAT M8 PLT	
9	804-162C	WASHER FLAT M10 PLT	
10	833-610C	LIGHT BOARD FRH	
11	833-611C	LIGHT BOARD FLH	
12	842-023C	HHCS M8X1.25X25 GR8.8 FTTHD	
13	842-057C	HSFCHCS M8X30 CSK	

# Tine Clamp Assembly

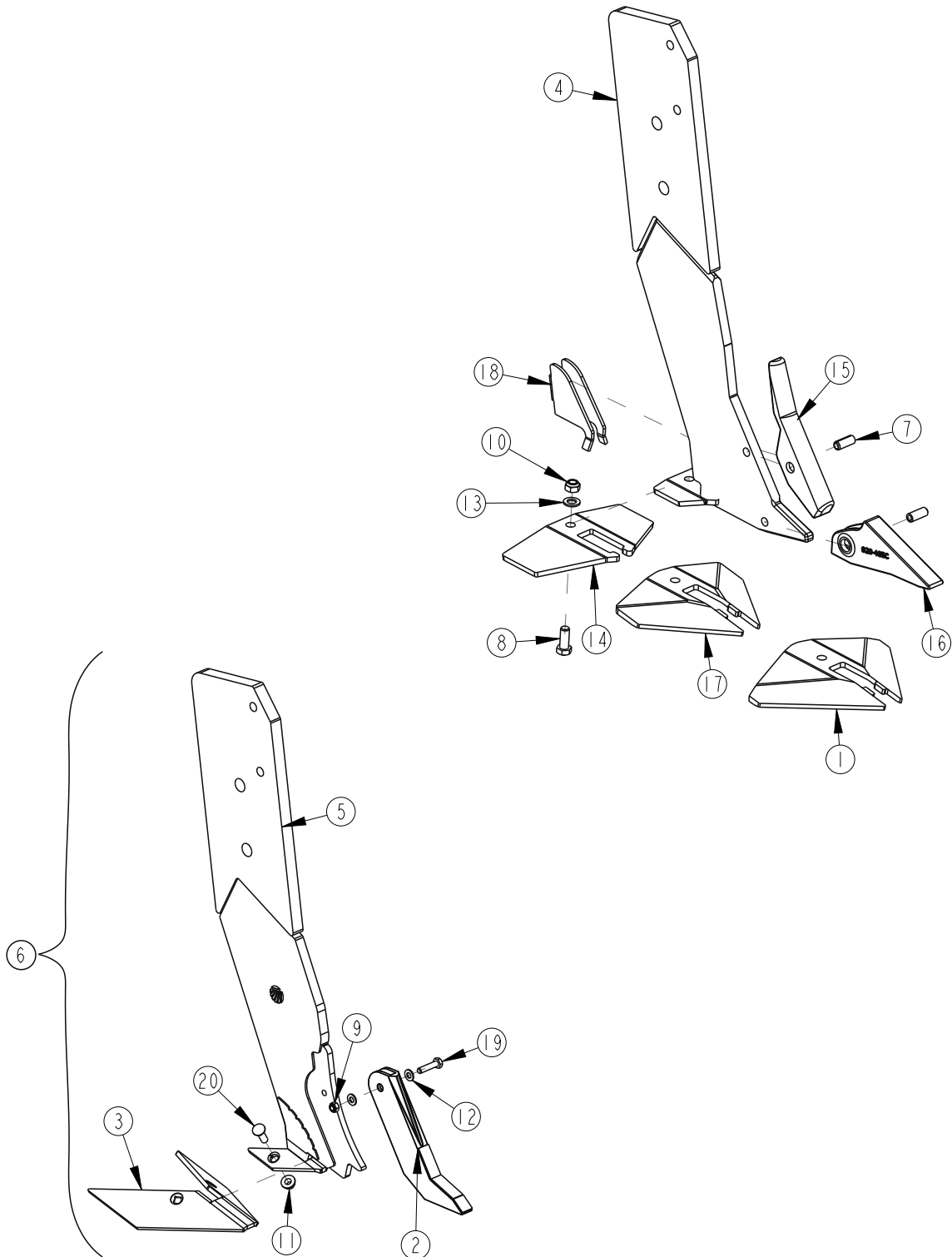


61003

## Tine Clamp Assembly

Item	Part No.	Part Description	Comments
1	--	TINE ASSEMBLY	SEE NEXT PAGE FOR OPTIONS
2	611-153D	PLATE 25MM	
3	611-335D	CLAMP - SHORT	
4	611-336D	CLAMP - LONG	
5	803-412C	NUT HEX M24X3 NYLON INSERT	
6	803-423C	NUT HEX M16X2 PLT	
7	803-425C	NUT HEX M30X3.5 PLT	
8	804-187C	WASHER SPRING LOCK M16 PLT	
9	804-255C	WASHER FLAT M24 - OD50MM	
10	804-257C	WASHER FLAT M30 - OD60MM PLT	
11	804-262C	WASHER SPRING LOCK M30 PLT	
12	842-076C	HHCS M16X2X120 GR8.8	
13	842-084C	HHCS M24X3X130 GR8.8	
14	842-174C	HHCS M30X3.5X150 GR8.8	

# Tine Options



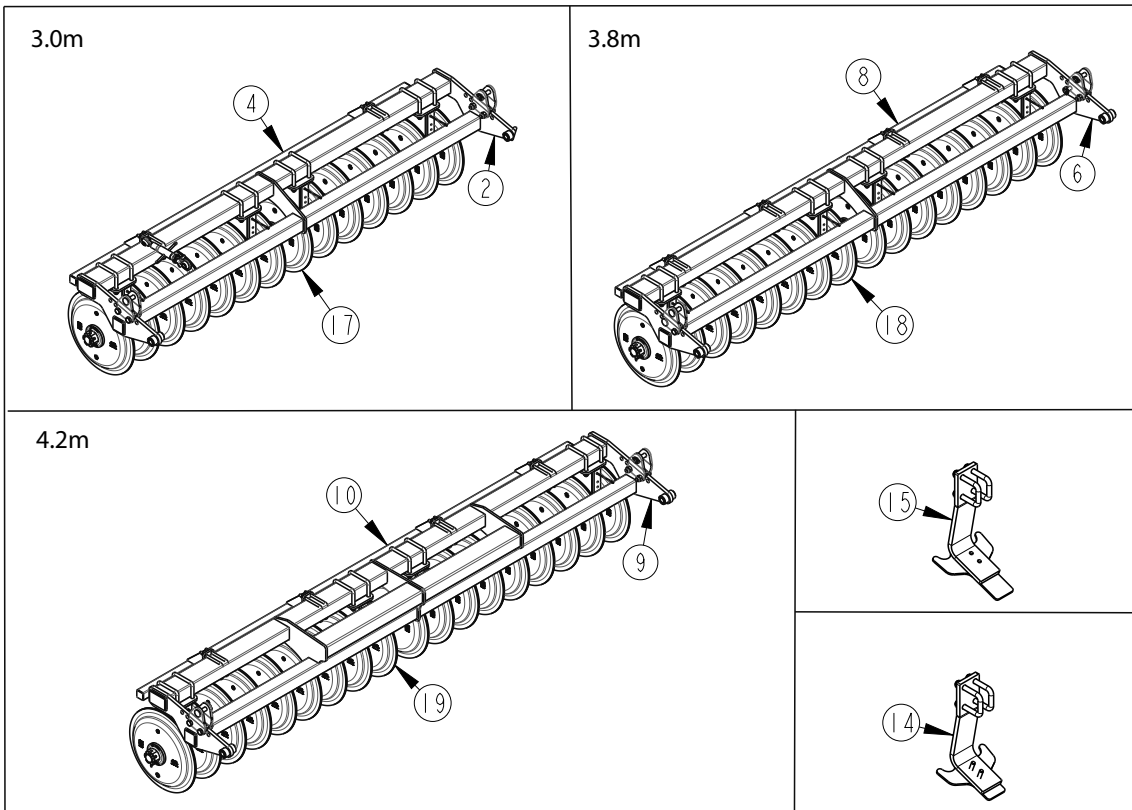
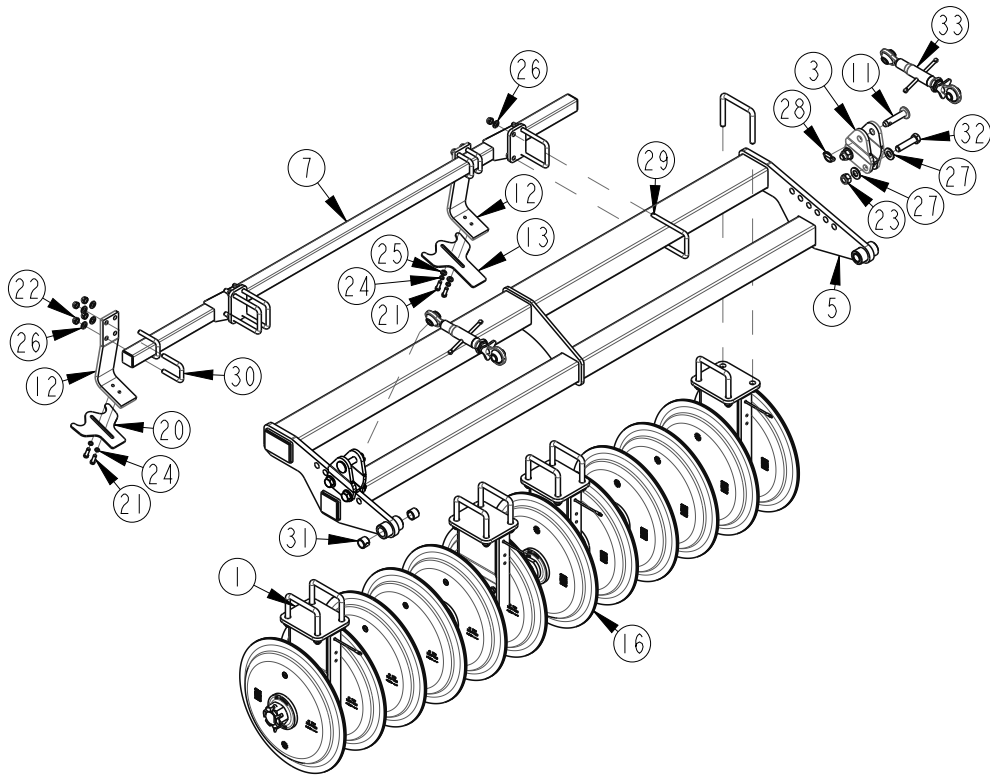
45004

## Tine Options

Item	Part No.	Part Description	Comments
1	602-359D	PLATE 10MM	
2	603-396D	EP POINT	
3	603-401D	WING LD	
4	611-110H	PROLIFT TINE - FL500	
5	611-140H	TINE - LD FL500	
6	611-141K	LD TINE ASSEMBLY	COMPLETE
7	800-442C	ROLL PIN Ø16X40	
8	802-703C	HHCS M16X2.0X40 GR8.8	
9	803-280C	NUT HEX NYLOCK M10X1.5 PLT	
10	803-282C	NUT HEX M16X2.00 NYLON INSERT	
11	803-420C	NUT HEX WHIZ M12X1.75	
12	804-162C	WASHER FLAT M10 PLT	
13	804-247C	WASHER FLAT M16 PLT	
14	820-483C	WING - PROLIFT LOW	
15	820-484C	WEARSHIN NON REVERSIBLE	
16	820-485C	POINT - PROLIFT	
17	820-486C	PLATE 10MM	
18	820-487C	WEAR SHROUD	
19	842-025C	HHCS M10X1.5X45 GR8.8	
20	842-059C	PLOW M12X1.75X40 GR8.8	

# Roll Frame Assembly

3.0m



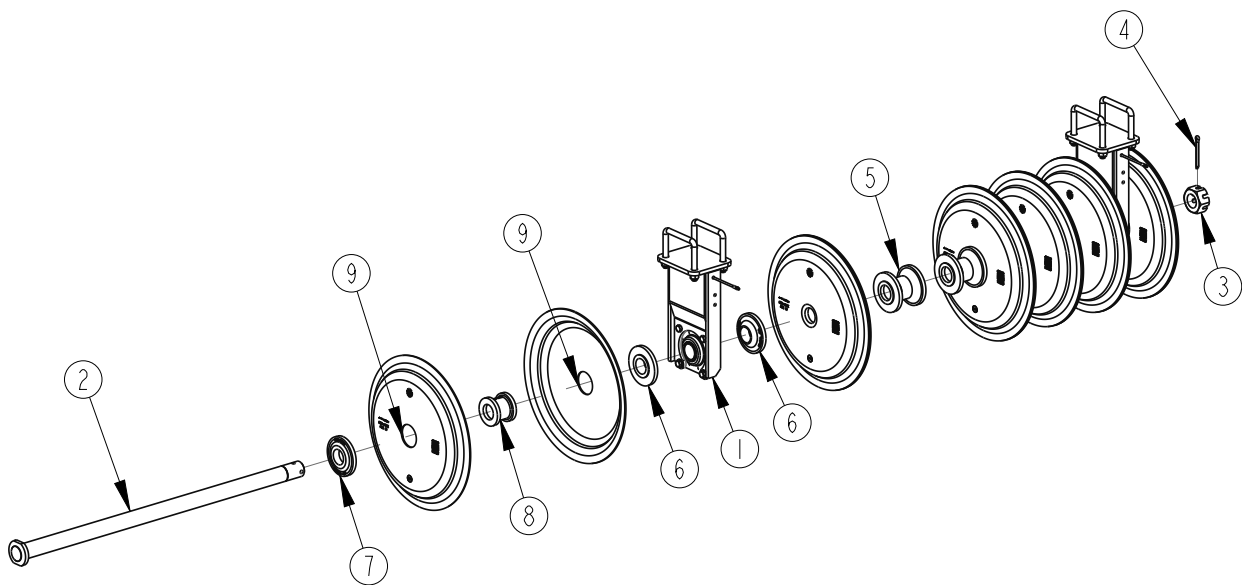
61002



## Roll Frame Assembly

Item	Part No.	Part Description	Comments
1	602-036K	PILLAR ASSEMBLY STD BRG	
2	611-003H	ROLL FRAME 3.5M	
3	611-004H	BOLT ON CLEVIS	
4	611-005H	SCRAPER RAIL 3.5M	
5	611-009H	ROLL FRAME 3.0M	
6	611-011H	ROLL FRAME 3.8M	
7	611-012H	SCRAPER RAIL 3.0M	
8	611-013H	SCRAPER RAIL 3.8M	
9	611-015H	ROLL FRAME 4.2M	
10	611-016H	SCRAPER RAIL 4.2M	
11	611-060D	PIN Ø25 X 115	
12	611-064D	PLATE 15MM	
13	611-065D	PLATE 6MM	
14	611-094V	SCRAPER - SHORT ASSEMBLY	COMPLETE ASSEMBLY
15	611-095V	SCRAPER - LONG ASSEMBLY	COMPLETE ASSEMBLY
16	611-098K	DD600 6 RING ASSEMBLY	
17	611-099K	DD600 7 RING ASSEMBLY	
18	611-100K	DD600 8 RING ASSEMBLY	
19	611-101K	DD600 9 RING ASSEMBLY	
20	611-226D	SCRAPER PLATE DD RING SHORT	
21	802-977C	HHCS M12X1.75X40 GR8.8	
22	803-282C	NUT HEX M16X2.00 NYLON INSERT	
23	803-412C	NUT HEX M24X3 NYLON INSERT	
24	804-159C	WASHER SPRING LOCK M12 PLT	
25	804-246C	WASHER FLAT M12 PLT	
26	804-247C	WASHER FLAT M16 PLT	
27	804-255C	WASHER FLAT M24 - OD50MM	
28	805-460C	LYNCH PIN CAT 2	
29	806-236C	U-BOLT M16-2.00 X 101 X 190	
30	806-241C	U-BOLT M16X2 X 62 X 100 GR8.8	
31	827-118C	BUSH SPRUNG Ø40 X Ø32 X 30	
32	842-071C	HHCS M24X3X100 GR8.8	
33	891-319C	TOPLINK CAT 2 - 9"	

# DD600 Roll Assembly

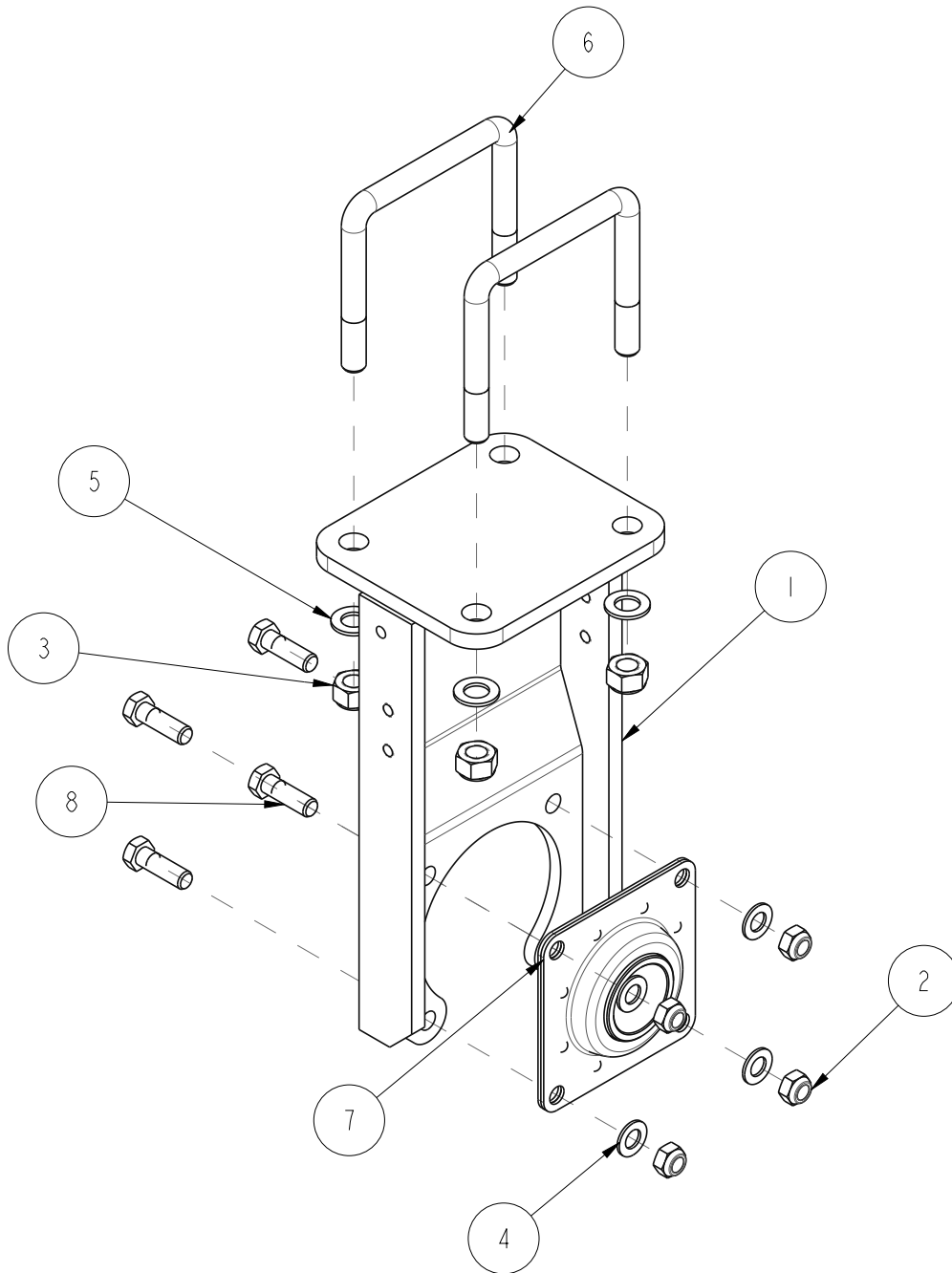


45018

**DD600 Roll Assembly**

<b>Item</b>	<b>Part No.</b>	<b>Part Description</b>	<b>Comments</b>
1	602-220K	PILLAR ASSEMBLY SFL BRG	
2	602-039H	DD AXLE Ø60X1369MM	FITS 6 RINGS (2x QTY ON 3.0m)
	602-034H	DD AXLE Ø60X1623MM	FITS 7 RINGS (2x QTY ON 3.5m)
	611-050H	DD AXLE Ø60X1857MM	FITS 8 RINGS (2x QTY ON 3.8m)
	611-051H	DD AXLE Ø60X2091MM	FITS 9 RINGS (2x QTY ON 4.2m)
3	803-424C	NUT CASTLE M60X5.5	
4	805-469C	PIN SPLIT Ø10X100	
5	812-408C	DD600 - SPOOL	
6	812-409C	DD600 - BEARING SPOOL	
7	812-410C	DD600 - NUT SPOOL	
8	812-411C	DD600 - INTERNAL SPACER	
9	820-465C	RING-DD600X5MM	

**DD600 & DD700 Pillar**

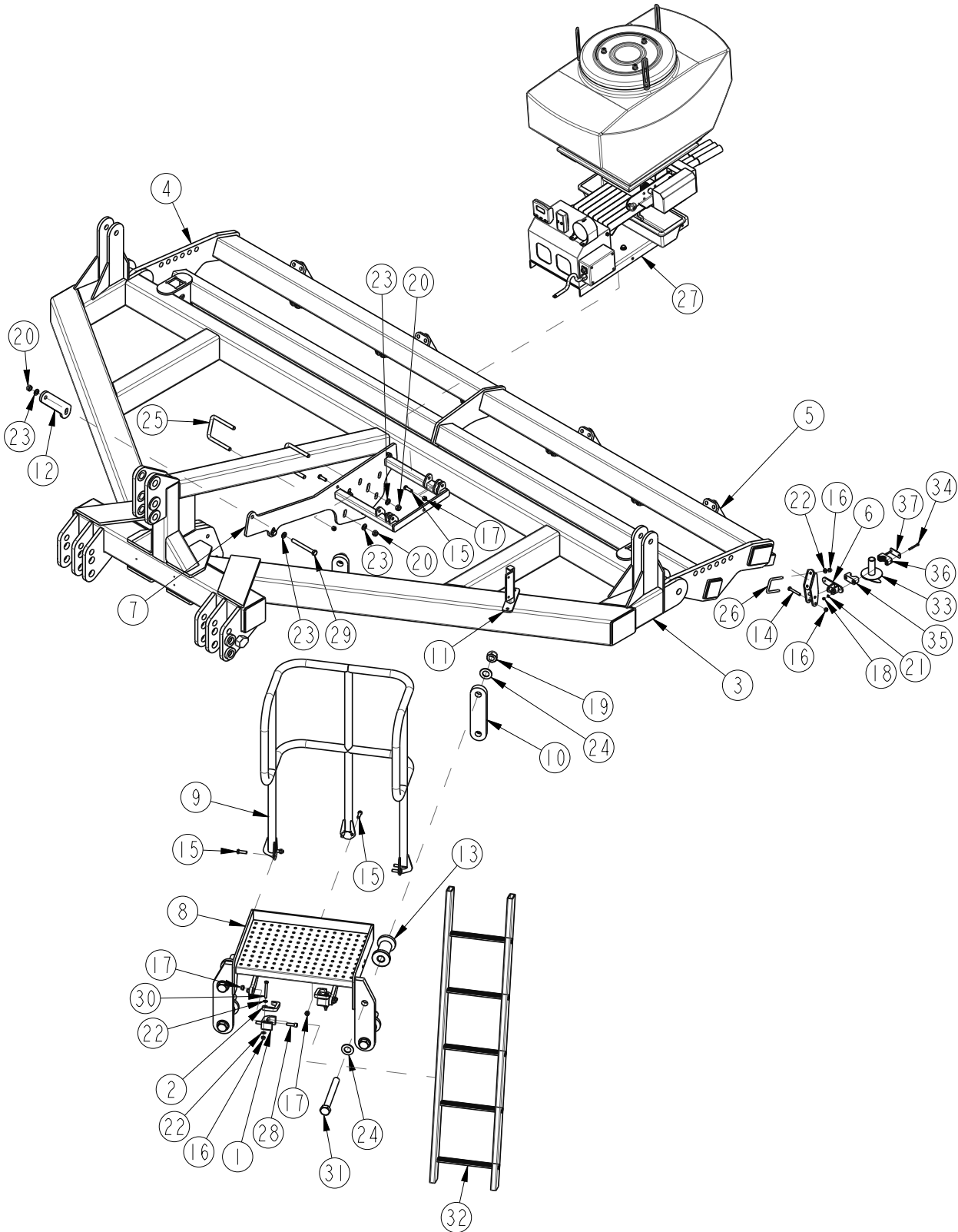


45025

**DD600 & 700 Pillar**

<b>Item</b>	<b>Part No.</b>	<b>Part Description</b>	<b>Comments</b>
1	602-004H	PRESS ROLL PILLAR	
2	803-282C	NUT HEX M16X2.00 NYLON INSERT	
3	803-393C	NUT HEX NYLOCK M20X2.5	
4	804-005C	FLAT WASHER M16 NARROW PLT	
5	804-244C	WASHER FLAT M20 PLT	
6	806-243C	U-BOLT M20X2.5 X 152 X 145	
7	822-282C	BEARING - PRESSED Ø61X56 SFL	
8	842-033C	HHCS M16X2X50 GR8.8	

# TurboJet Mounting Kit



61015

## TurboJet Mounting Kit

Item	Part No.	Part Description	Comments
1	602-355D	NYLON STEP GUIDE	
2	602-356D	NYLON LADDER LOCK	
3	611-010H	MAINFRAME - 3.8M	
4	611-011H	ROLL FRAME 3.8M	
5	611-013H	SCRAPER RAIL 3.8M	
6	611-045H	OSR OUTLET MOUNT	
7	611-072H	TURBOJET MTG BRACKET	
8	611-073H	OSR PLATFORM - FL500	
9	611-074H	OSR HANDRAIL - FL500	
10	611-153D	PLATE 25MM	
11	611-158H	RADAR MOUNT	
12	611-319D	RETAINING PLATE	
13	611-327D	NYLON SPACER BUSH	
14	802-975C	HHCS M10X1.5X70 GR8.8	
15	802-977C	HHCS M12X1.75X40 GR8.8	
16	803-280C	NUT HEX NYLOCK M10X1.5 PLT	
17	803-281C	NUT HEX NYLOCK M12X1.75 PLT	
18	803-386C	NUT HEX NYLOCK M6X1	
19	803-416C	NUT HEX M30X3.5 NYLON INSERT	
20	803-435C	NUT HEX STAYTIGHT M16X2	
21	804-160C	WASHER FLAT M6 PLT	
22	804-162C	WASHER FLAT M10 PLT	
23	804-247C	WASHER FLAT M16 PLT	
24	804-257C	WASHER FLAT M30 - OD60MM PLT	
25	806-240C	U-BOLT M16X2 X 101 X 145	
26	806-242C	U-BOLT M10X1.5 X 61 X 83 GR8.8	
27	823-410C	TURBOJET UNIT	
28	842-069C	HSHCS M12X1.75X40 GR12.9	
29	842-072C	HHCS M16X2X150 GR8.8	
30	842-089C	HHCS M10X1.5X80 GR8.8	
31	842-160C	HHCS M30X3.5X260 GR8.8	
32	891-306C	LADDER - 5 RUNG	
33	891-334C	DISTRIBUTOR HEAD	
34	TJ223	CLAMP BOLT	NOT AVAILABLE INDIVIDUALLY
35	TJ223	CLAMP 1	NOT AVAILABLE INDIVIDUALLY
36	TJ223	CLAMP 2	NOT AVAILABLE INDIVIDUALLY
37	TJ223	CLAMP PLATE	NOT AVAILABLE INDIVIDUALLY









<b>Great Plains UK Ltd.</b>	Tel.: +44(0)1529 304654
Woodbridge Road, Sleaford	Fax: +44(0)1529 413468
Lincolnshire, NG34 7EW	E-Mail: <a href="mailto:simba@greatplainsmfg.com">simba@greatplainsmfg.com</a>
United Kingdom	Web: <a href="http://www.greatplainsmfg.co.uk">www.greatplainsmfg.co.uk</a>